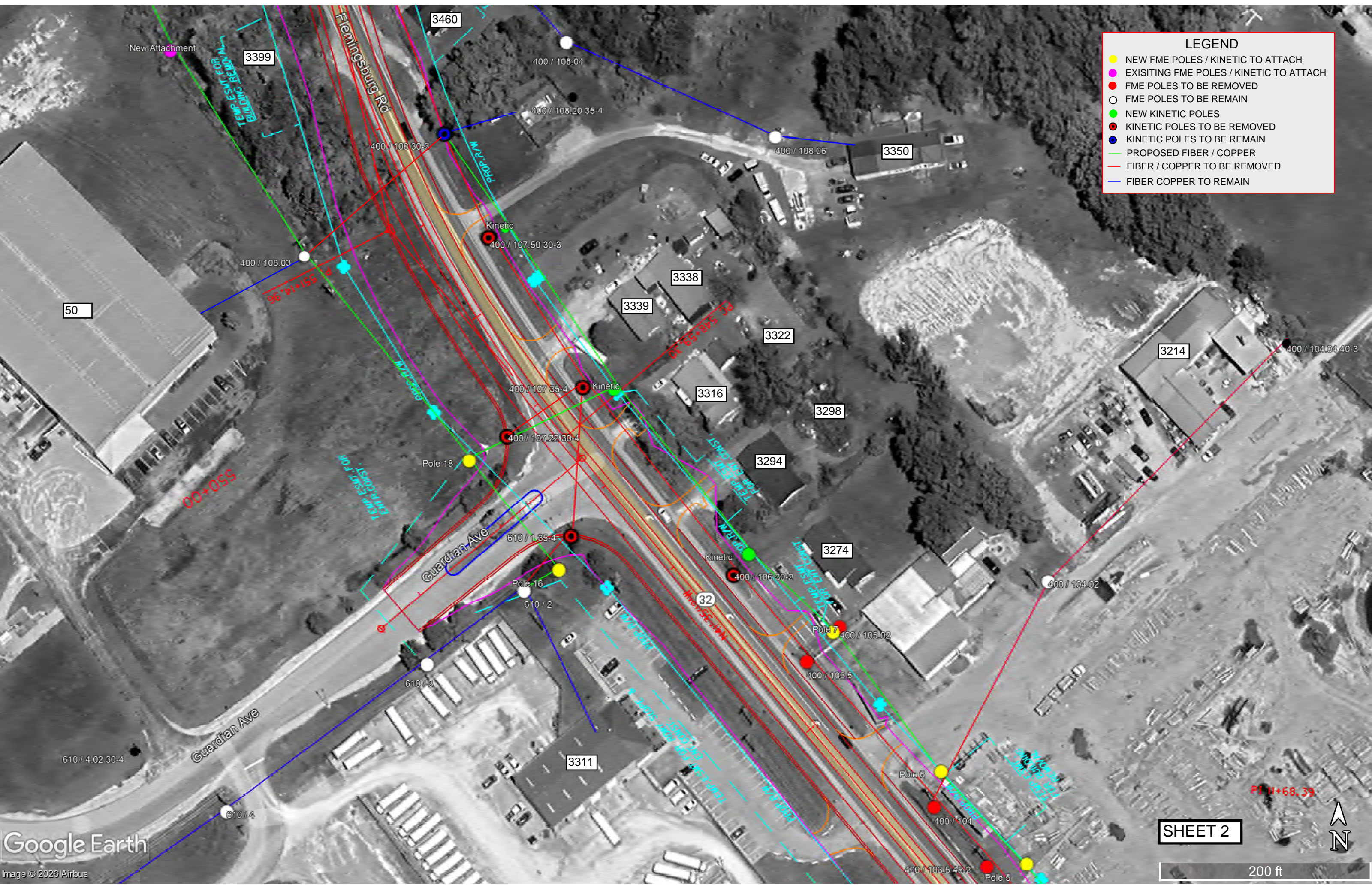


LEGEND

- NEW FME POLES / KINETIC TO ATTACH
- EXISTING FME POLES / KINETIC TO ATTACH
- FME POLES TO BE REMOVED
- FME POLES TO BE REMAIN
- NEW KINETIC POLES
- KINETIC POLES TO BE REMOVED
- KINETIC POLES TO BE REMAIN
- PROPOSED FIBER / COPPER
- FIBER / COPPER TO BE REMOVED
- FIBER COPPER TO REMAIN



SHEET 2

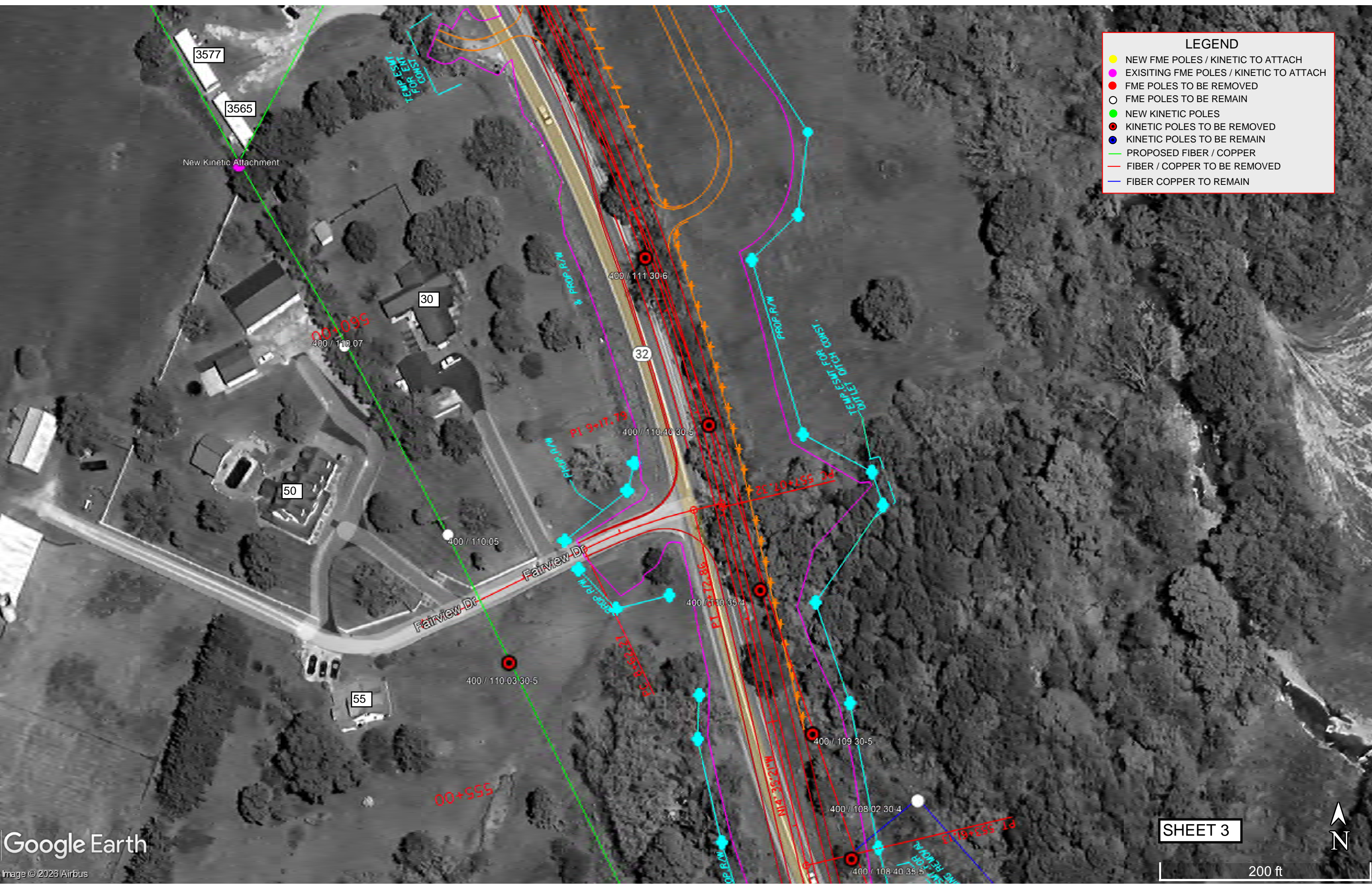
200 ft

Google Earth

Image © 2026 Airbus

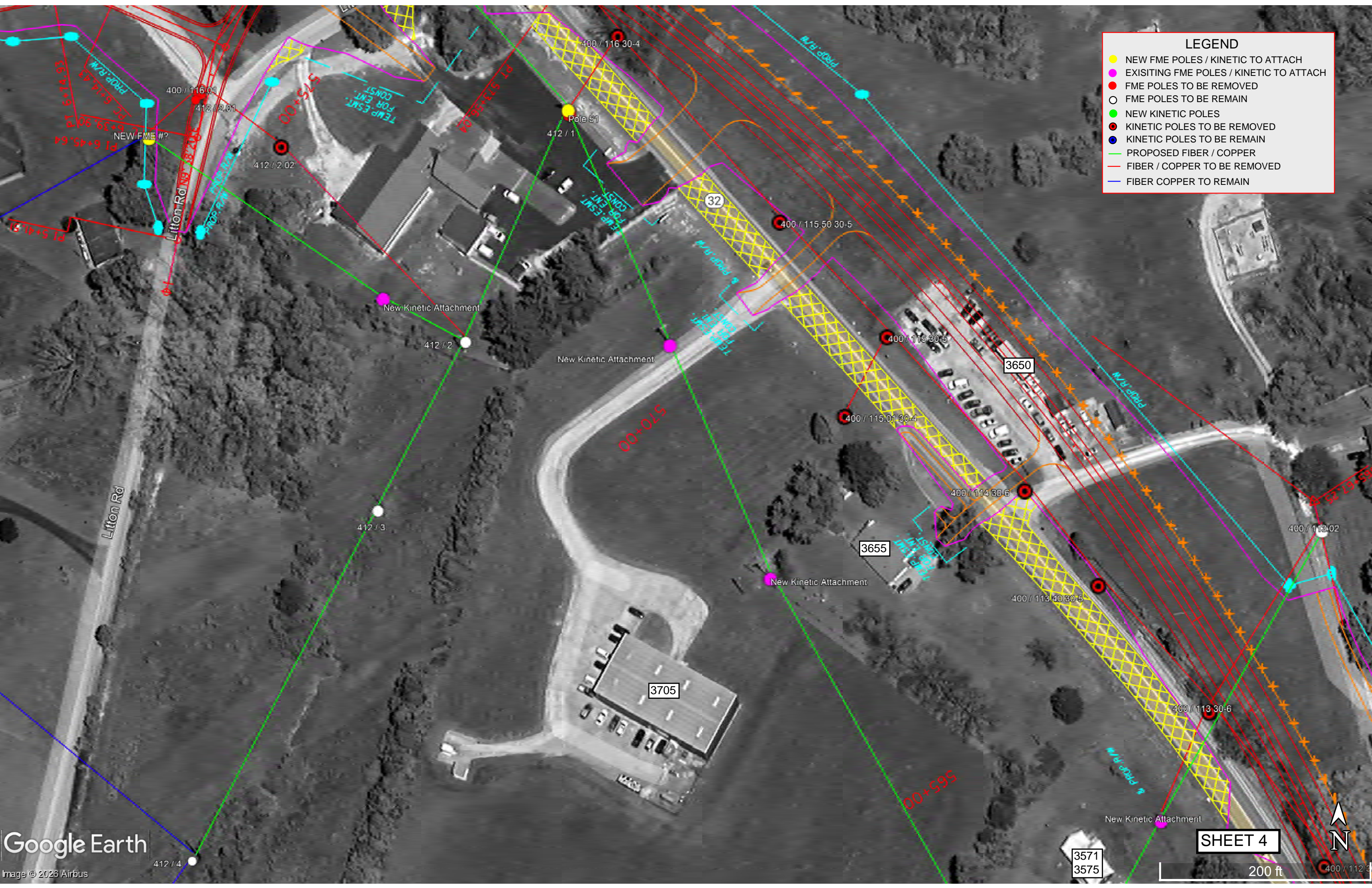
LEGEND

- NEW FME POLES / KINETIC TO ATTACH
- EXISTING FME POLES / KINETIC TO ATTACH
- FME POLES TO BE REMOVED
- FME POLES TO BE REMAIN
- NEW KINETIC POLES
- KINETIC POLES TO BE REMOVED
- KINETIC POLES TO BE REMAIN
- PROPOSED FIBER / COPPER
- FIBER / COPPER TO BE REMOVED
- FIBER COPPER TO REMAIN



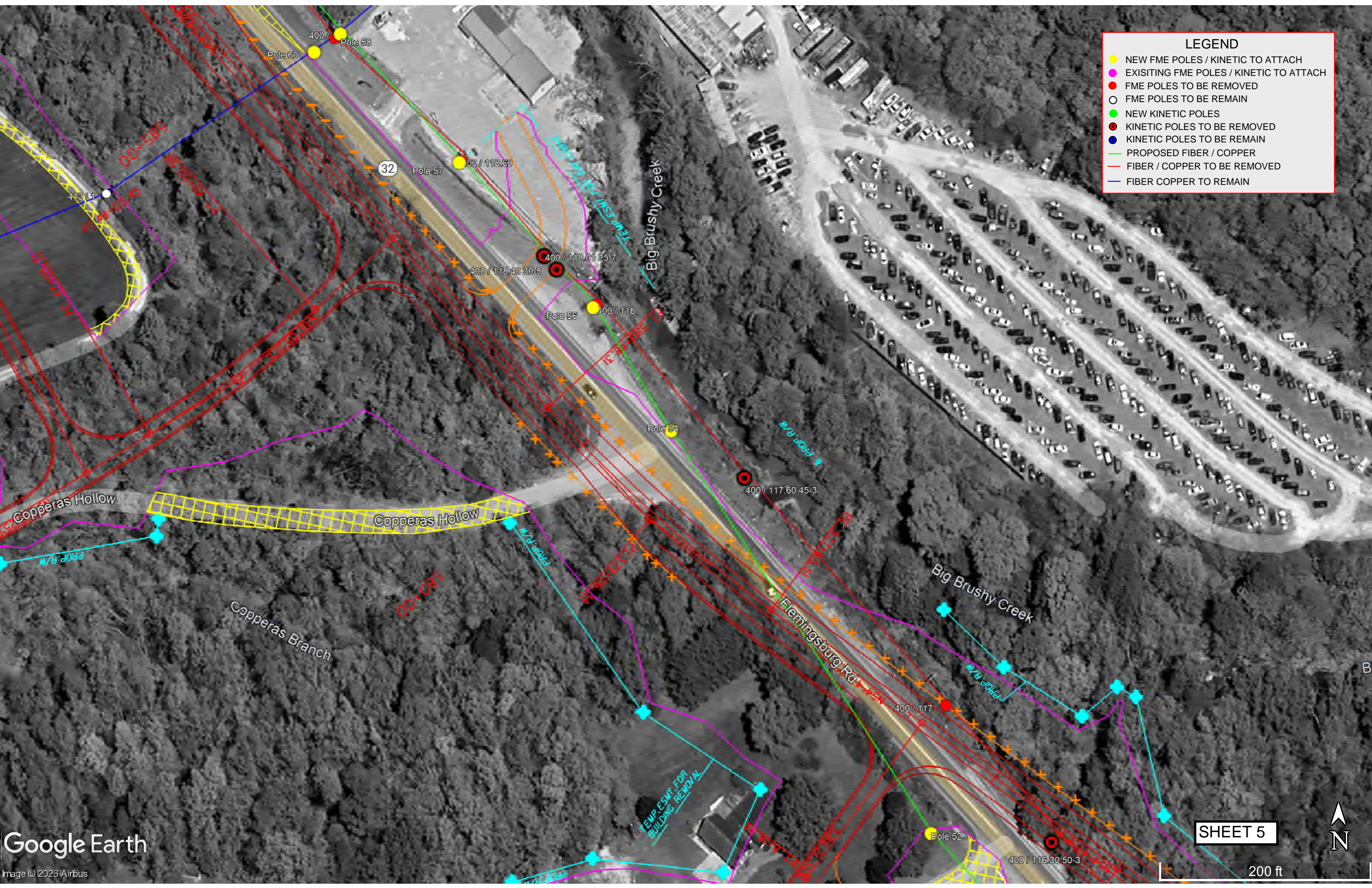
LEGEND

- NEW FME POLES / KINETIC TO ATTACH
- EXISTING FME POLES / KINETIC TO ATTACH
- FME POLES TO BE REMOVED
- FME POLES TO BE REMAIN
- NEW KINETIC POLES
- KINETIC POLES TO BE REMOVED
- KINETIC POLES TO BE REMAIN
- PROPOSED FIBER / COPPER
- FIBER / COPPER TO BE REMOVED
- FIBER COPPER TO REMAIN



LEGEND

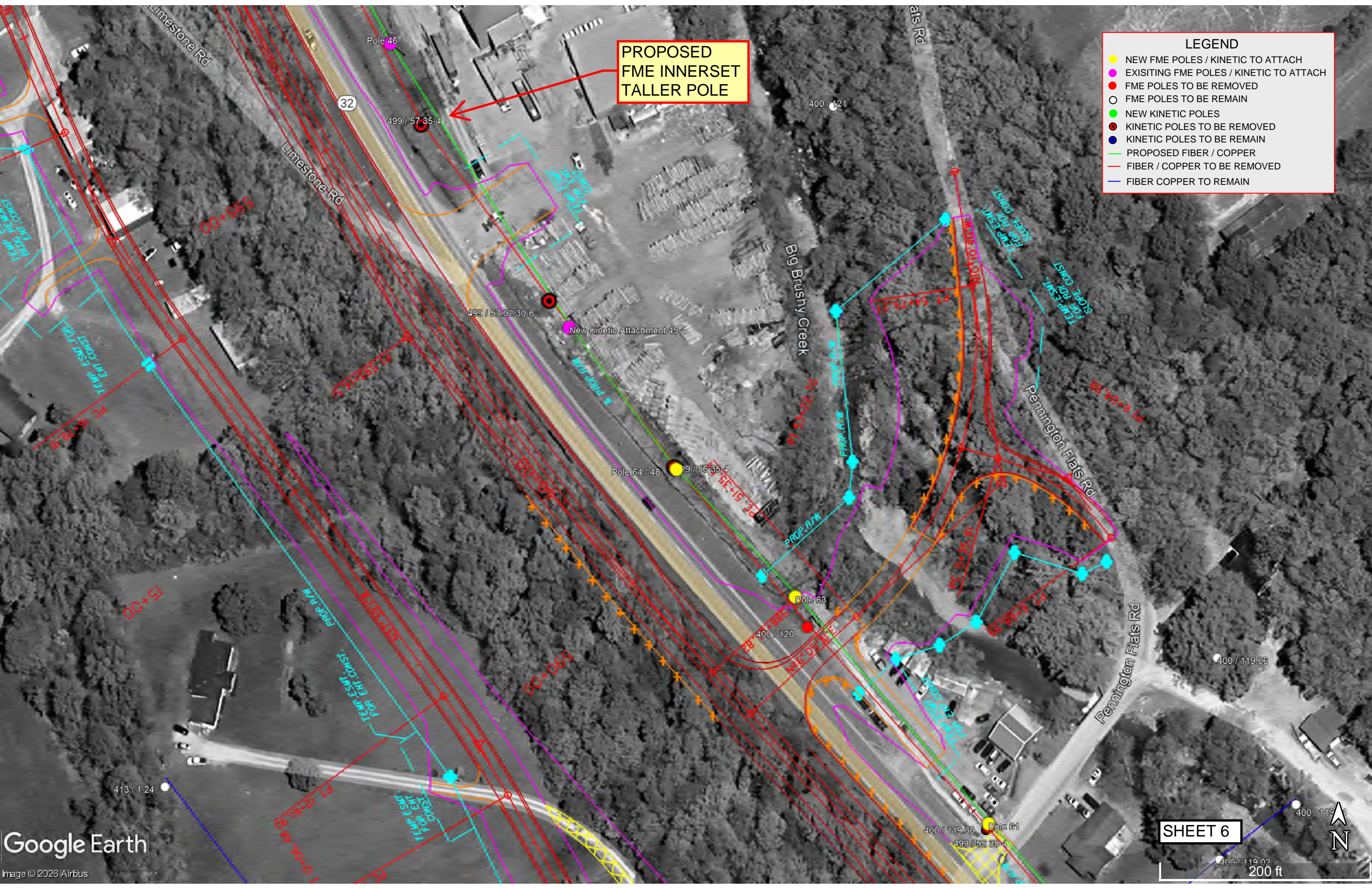
- NEW FME POLES / KINETIC TO ATTACH
- EXISTING FME POLES / KINETIC TO ATTACH
- FME POLES TO BE REMOVED
- FME POLES TO BE REMAIN
- NEW KINETIC POLES
- KINETIC POLES TO BE REMOVED
- KINETIC POLES TO BE REMAIN
- PROPOSED FIBER / COPPER
- FIBER / COPPER TO BE REMOVED
- FIBER COPPER TO REMAIN

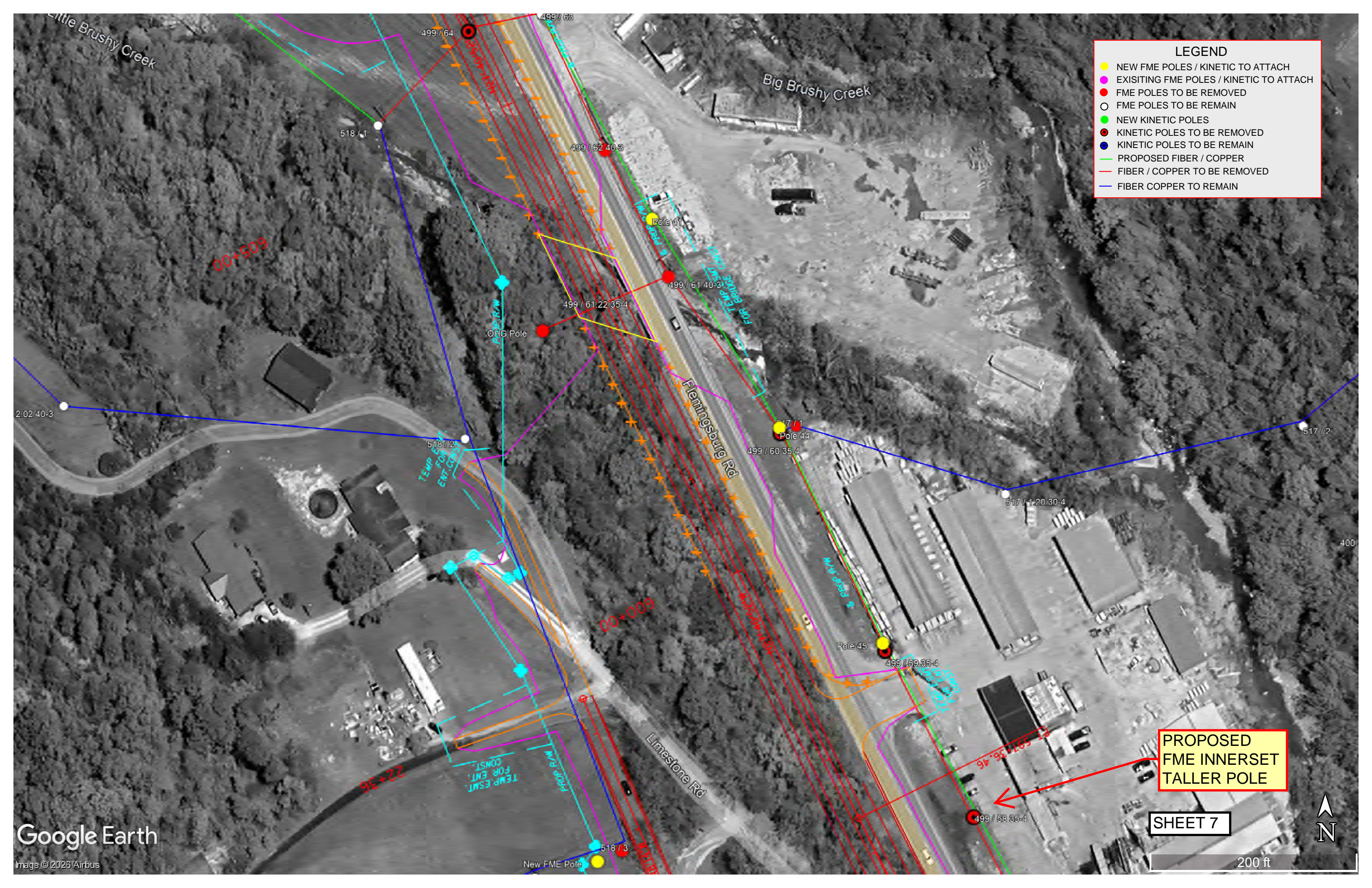


**PROPOSED
FME INNERSET
TALLER POLE**

LEGEND

- NEW FME POLES / KINETIC TO ATTACH
- EXISTING FME POLES / KINETIC TO ATTACH
- FME POLES TO BE REMOVED
- FME POLES TO BE REMAIN
- NEW KINETIC POLES
- KINETIC POLES TO BE REMOVED
- KINETIC POLES TO BE REMAIN
- PROPOSED FIBER / COPPER
- FIBER / COPPER TO BE REMOVED
- FIBER COPPER TO REMAIN





LEGEND

- NEW FME POLES / KINETIC TO ATTACH
- EXISTING FME POLES / KINETIC TO ATTACH
- FME POLES TO BE REMOVED
- FME POLES TO BE REMAIN
- NEW KINETIC POLES
- KINETIC POLES TO BE REMOVED
- KINETIC POLES TO BE REMAIN
- PROPOSED FIBER / COPPER
- FIBER / COPPER TO BE REMOVED
- FIBER COPPER TO REMAIN

**PROPOSED
FME INNERSET
TALLER POLE**

SHEET 7

200 ft



New FME Pole

Flemingsburg Rd

Limestone Rd

Big Brushy Creek

Little Brushy Creek

00+509

00+009

95+22

Temp ESMT
for Ent. Const.

Temp ESMT
for Ent. Const.

Prop. P.M.

Temp ESMT
for Ent. Const.

OHG Pole

518 / 1

499 / 64

499 / 63

499 / 62 40-3

499 / 61 22 35-4

499 / 61 40-3

499 / 60 35-4

499 / 59 35-4

499 / 58 35-4

517 / 1 20 30-4

517 / 2

2.02 40-3

400

518 / 3

New FME Pole

518 / 1

518 / 2

518 / 3

518 / 4

518 / 5

518 / 6

518 / 7

518 / 8

518 / 9

518 / 10

518 / 11

518 / 12

518 / 13

518 / 14

518 / 15

518 / 16

518 / 17

518 / 18

518 / 19

518 / 20

518 / 21

518 / 22

518 / 23

518 / 24

518 / 25

518 / 26

518 / 27

518 / 28

518 / 29

518 / 30

518 / 31

518 / 32

518 / 33

518 / 34

518 / 35

518 / 36

518 / 37

518 / 38

518 / 39

518 / 40

518 / 41

518 / 42

518 / 43

518 / 44

518 / 45

518 / 46

518 / 47

518 / 48

518 / 49

518 / 50

518 / 51

518 / 52

518 / 53

518 / 54

518 / 55

518 / 56

518 / 57

518 / 58

518 / 59

518 / 60

518 / 61

518 / 62

518 / 63

518 / 64

518 / 65

518 / 66

518 / 67

518 / 68

518 / 69

518 / 70

518 / 71

518 / 72

518 / 73

518 / 74

518 / 75

518 / 76

518 / 77

518 / 78

518 / 79

518 / 80

518 / 81

518 / 82

518 / 83

518 / 84

518 / 85

518 / 86

518 / 87

518 / 88

518 / 89

518 / 90

518 / 91

518 / 92

518 / 93

518 / 94

518 / 95

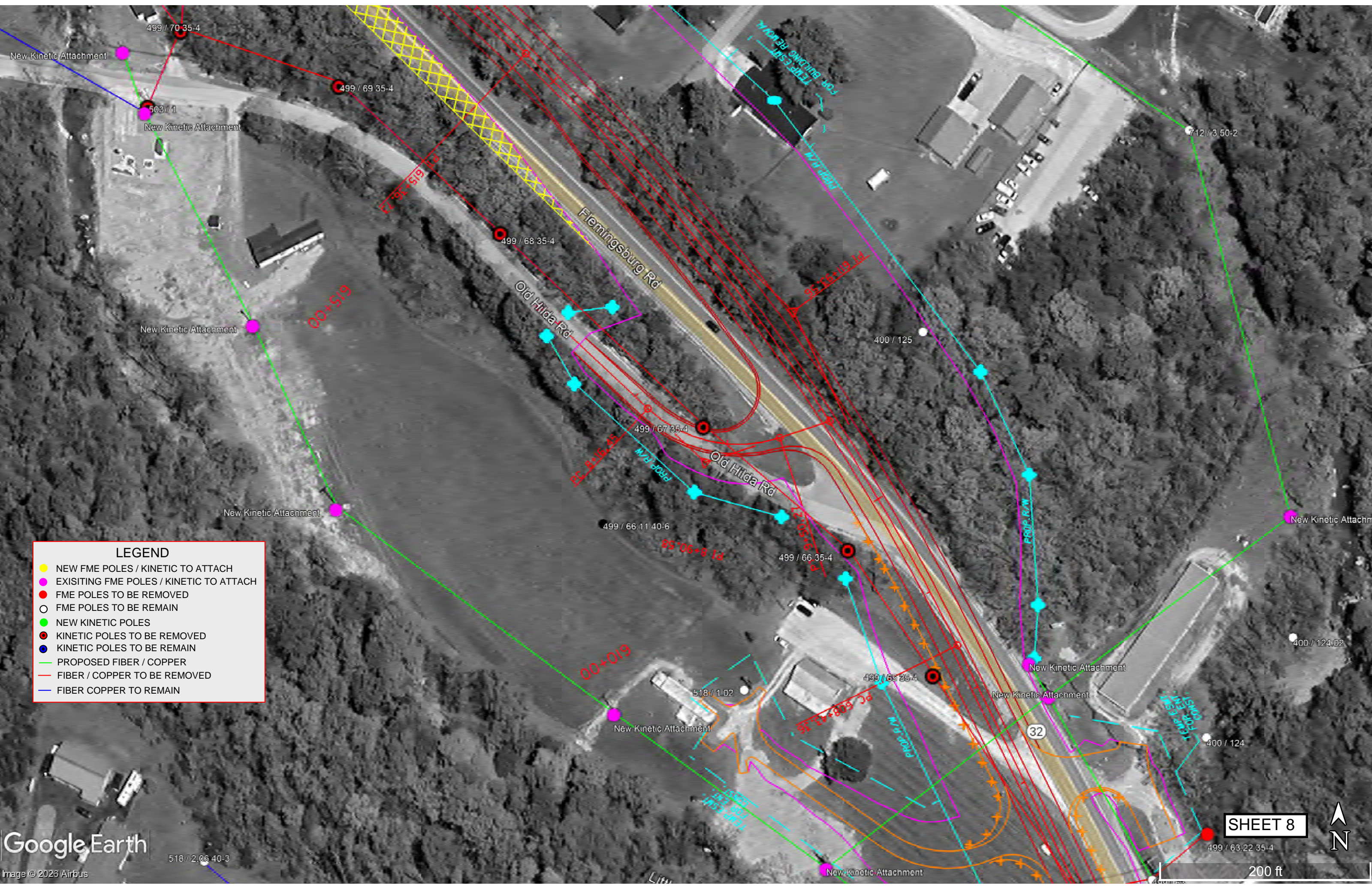
518 / 96

518 / 97

518 / 98

518 / 99

518 / 100



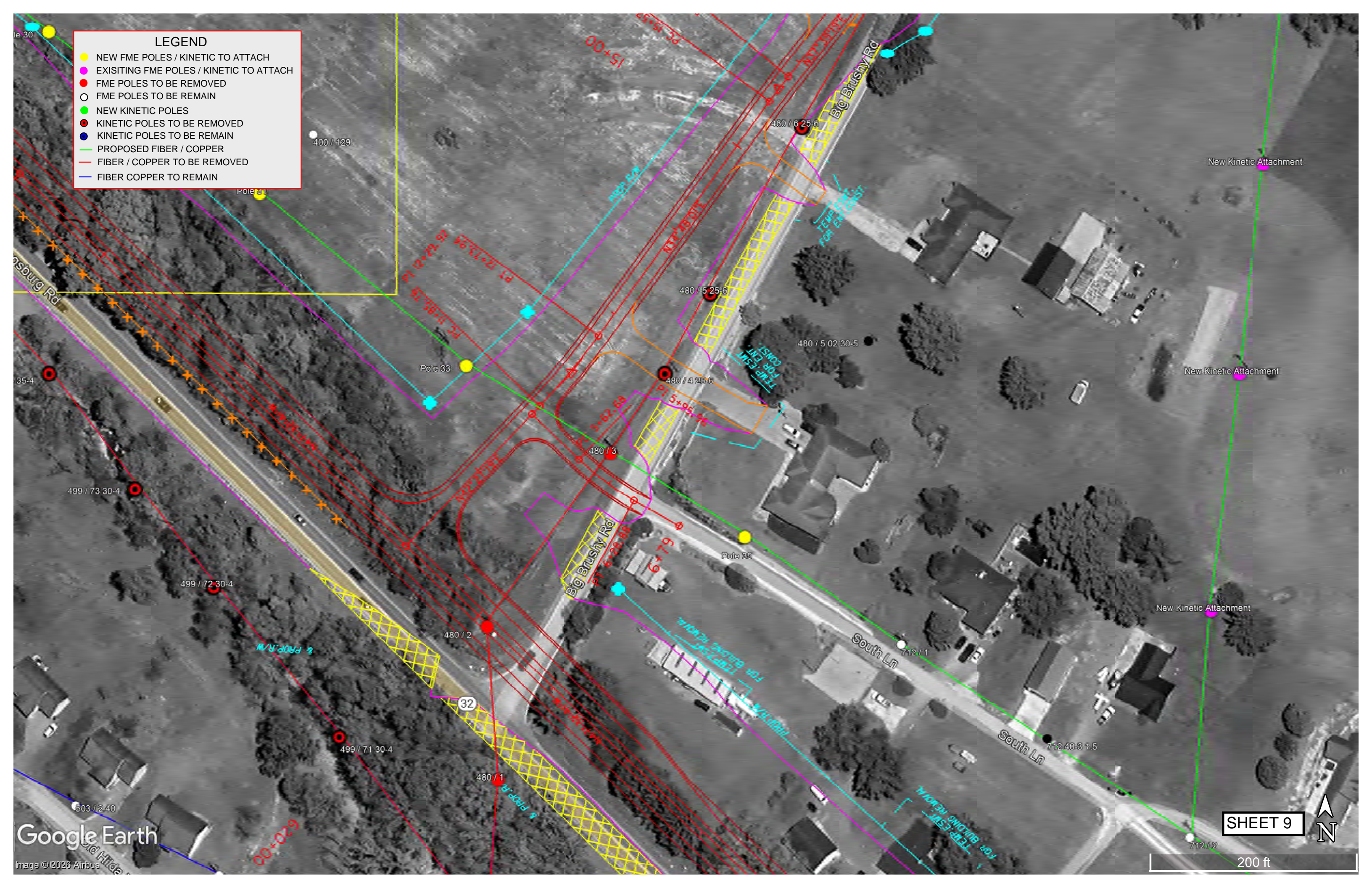
LEGEND

- NEW FME POLES / KINETIC TO ATTACH
- EXISTING FME POLES / KINETIC TO ATTACH
- FME POLES TO BE REMOVED
- FME POLES TO BE REMAIN
- NEW KINETIC POLES
- KINETIC POLES TO BE REMOVED
- KINETIC POLES TO BE REMAIN
- PROPOSED FIBER / COPPER
- FIBER / COPPER TO BE REMOVED
- FIBER COPPER TO REMAIN



LEGEND

- NEW FME POLES / KINETIC TO ATTACH
- EXISTING FME POLES / KINETIC TO ATTACH
- FME POLES TO BE REMOVED
- FME POLES TO BE REMAIN
- NEW KINETIC POLES
- KINETIC POLES TO BE REMOVED
- KINETIC POLES TO BE REMAIN
- PROPOSED FIBER / COPPER
- FIBER / COPPER TO BE REMOVED
- FIBER COPPER TO REMAIN



LEGEND

- NEW FME POLES / KINETIC TO ATTACH
- EXISTING FME POLES / KINETIC TO ATTACH
- FME POLES TO BE REMOVED
- FME POLES TO BE REMAIN
- NEW KINETIC POLES
- KINETIC POLES TO BE REMOVED
- KINETIC POLES TO BE REMAIN
- PROPOSED FIBER / COPPER
- FIBER / COPPER TO BE REMOVED
- FIBER COPPER TO REMAIN



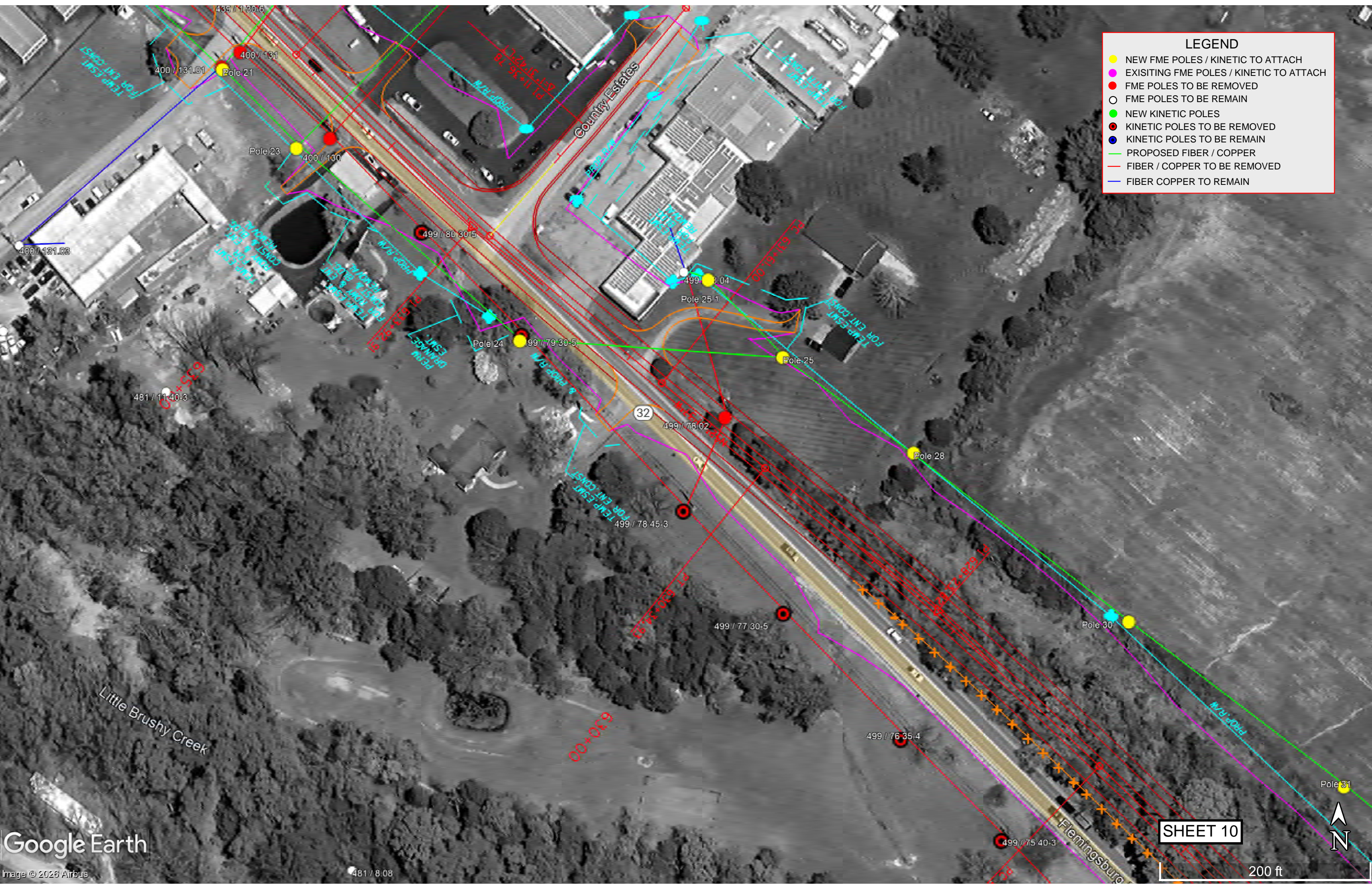
LEGEND

- NEW FME POLES / KINETIC TO ATTACH
- EXISTING FME POLES / KINETIC TO ATTACH
- FME POLES TO BE REMOVED
- FME POLES TO BE REMAIN
- NEW KINETIC POLES
- KINETIC POLES TO BE REMOVED
- KINETIC POLES TO BE REMAIN
- PROPOSED FIBER / COPPER
- FIBER / COPPER TO BE REMOVED
- FIBER COPPER TO REMAIN



LEGEND

- NEW FME POLES / KINETIC TO ATTACH
- EXISTING FME POLES / KINETIC TO ATTACH
- FME POLES TO BE REMOVED
- FME POLES TO BE REMAIN
- NEW KINETIC POLES
- KINETIC POLES TO BE REMOVED
- KINETIC POLES TO BE REMAIN
- PROPOSED FIBER / COPPER
- FIBER / COPPER TO BE REMOVED
- FIBER COPPER TO REMAIN



LEGEND

- NEW FME POLES / KINETIC TO ATTACH
- EXISTING FME POLES / KINETIC TO ATTACH
- FME POLES TO BE REMOVED
- FME POLES TO BE REMAIN
- NEW KINETIC POLES
- KINETIC POLES TO BE REMOVED
- KINETIC POLES TO BE REMAIN
- PROPOSED FIBER / COPPER
- FIBER / COPPER TO BE REMOVED
- FIBER COPPER TO REMAIN

**PROPOSED
FME POLE
LOCATION**

SHEET 11



200 ft



LEGEND

- NEW FME POLES / KINETIC TO ATTACH
- EXISTING FME POLES / KINETIC TO ATTACH
- FME POLES TO BE REMOVED
- FME POLES TO BE REMAIN
- NEW KINETIC POLES
- KINETIC POLES TO BE REMOVED
- KINETIC POLES TO BE REMAIN
- PROPOSED FIBER / COPPER
- FIBER / COPPER TO BE REMOVED
- FIBER COPPER TO REMAIN

